



End Terraced House

30 Ivanhoe Drive, Saltcoats,



taylorandhenderson.co.uk

1		2		1		C	EPC rating
---	--	---	--	---	--	---	----------------------



30 Ivanhoe Drive

Taylor and Henderson are delighted to bring to the market this end terraced villa offered to the market in walk in condition.

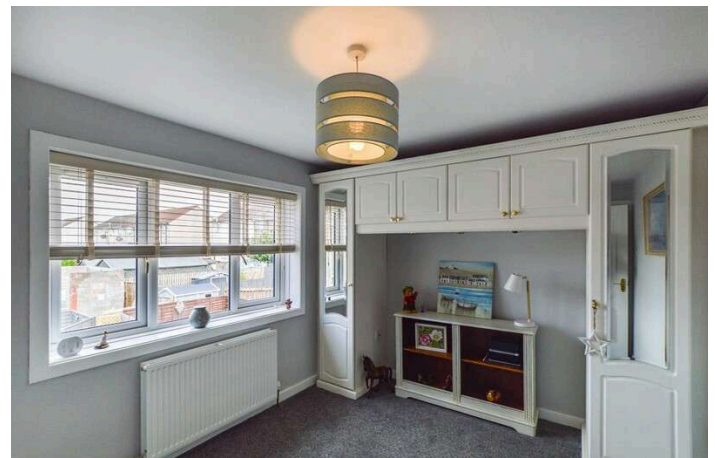
The accommodation, in fresh decorative order, comprises of entrance hallway, lounge/dining room with french doors into the rear garden, modern fitted kitchen with door leading to the rear garden on the ground floor. Upstairs boasts 2 double bedrooms and bathroom.

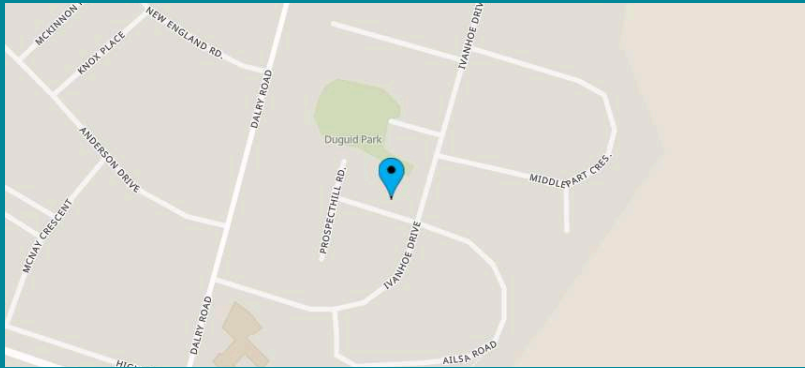
The property benefits from newly installed gas central heating system & double glazing. The front garden is mainly laid in lawn, bound by hedgerow with a driveway. The rear has a decked area, paving and lawn. There is a detached garage/workshop which is fully lined with electricity.

Saltcoats and nearby Ardrossan offer a range of local amenities including a superb beach, local shops, supermarkets, restaurants, schools, leisure facilities, bus services and regular rail links to Glasgow and all West Coast towns and thus is well located for travel throughout West Central Scotland. There is also a regular ferry service to the Isle of Arran from Ardrossan Marina.

Measurements

Reception Hallway	
Lounge	18'6 x 11'6
Kitchen	9' x 6'2
Bedroom 1	15' x 8'9
Bedroom 2	11'7 x 9'
Bathroom	6'3 x 5'4

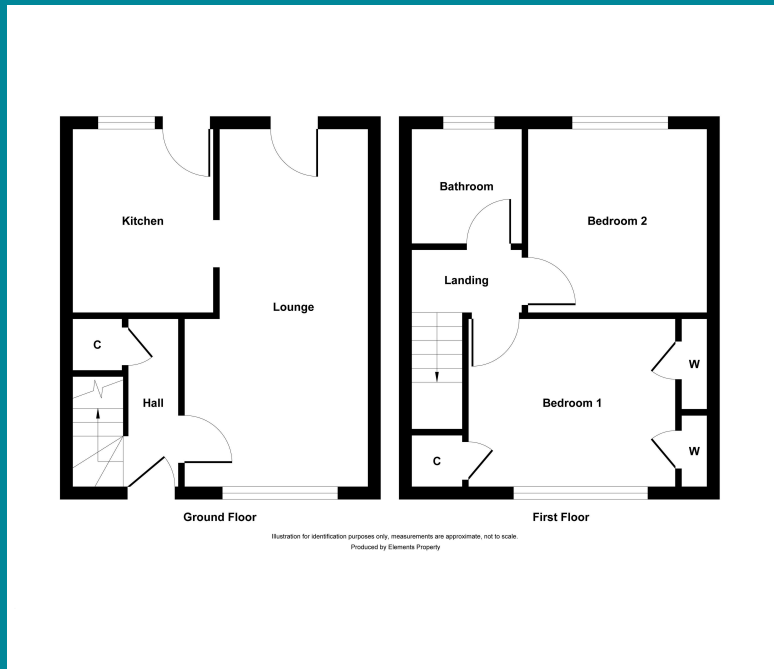




Viewing
Through solicitors on 01294 606700

Email
property@taylorandhenderson.co.uk

Reference
E478488



Our Offices

51 Hamilton Street, Saltcoats, Ayrshire, KA21 5DX
Tel: 01294 606700 & Fax: 01294 464827

22 Bank Street, Irvine, Ayrshire, KA12 0AG
Tel: 01294 278306 & Fax: 01294 272886

83 Main Street, Kilwinning, Ayrshire, KA13 6AN
Tel: 01294 557506 & Fax: 01294 558552
Email: property@taylorandhenderson.co.uk

espc rightmove  ZOOPLA  OnTheMarket



DISCLAIMER: Whilst we endeavour to make these particulars as accurate as possible, they do not form part of any contract of offer, nor are they guaranteed. Measurements are approximate and in most cases are taken with a digital/sonic-measuring device and are taken to the widest point. We have not tested the electricity, gas or water services or any appliances. Photographs are reproduced for general information and it must not be inferred that any item is included for sale with the property. If there is any part of this that you find misleading or simply wish clarification on any point, please contact our office immediately when we will endeavour to assist you in any way possible.