



Terraced House

68 Winstanley Wynd, KILWINNING, KA13 6EB



taylorandhenderson.co.uk

1		2		1		C	EPC rating
---	--	---	--	---	--	---	----------------------



68 Winstanley Wynd

Taylor and Henderson are delighted to bring this Mid Terraced Villa offered to the market in walk in condition situated within residential area only a short walk to the train station .

The accommodation on offer comprises Hallway, Lounge with French doors to garden, Modern Fitted Kitchen with integrated appliances, 2 Double Bedrooms and fully Tiled Bathroom.

The property also benefits from Double Glazing, Gas Central Heating and Loft space storage. The South facing garden has a newly laid deck, decorative chips and a path leading to the parking area. There is also a timber shed.

Kilwinning offers a wide range of local amenities to include shops, schooling at both primary and secondary levels, bus routes and excellent road links to both Glasgow and Ayr. Kilwinning also has mainline train links with Glasgow to the north and Ayr to the south. Glasgow and Prestwick Airport are 20 and 15 miles respectively with regular scheduled international flights. Internal viewing highly recommended

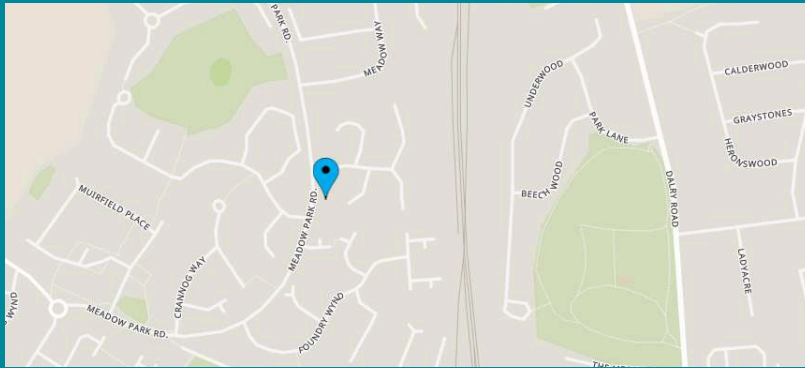
Measurements

Reception Hallway	Room 1 Dimensions
Lounge	16'10 x 11'8
Kitchen	8'8 x 8'
Bedroom 1	12'5 x 11'9 (at widest)
Bedroom 2	12' x 6'
Bathroom	8' x 5'6

Extras Included

All carpets, floor coverings, gas hob, double oven, hood, integrated fridge/freezer and dishwasher

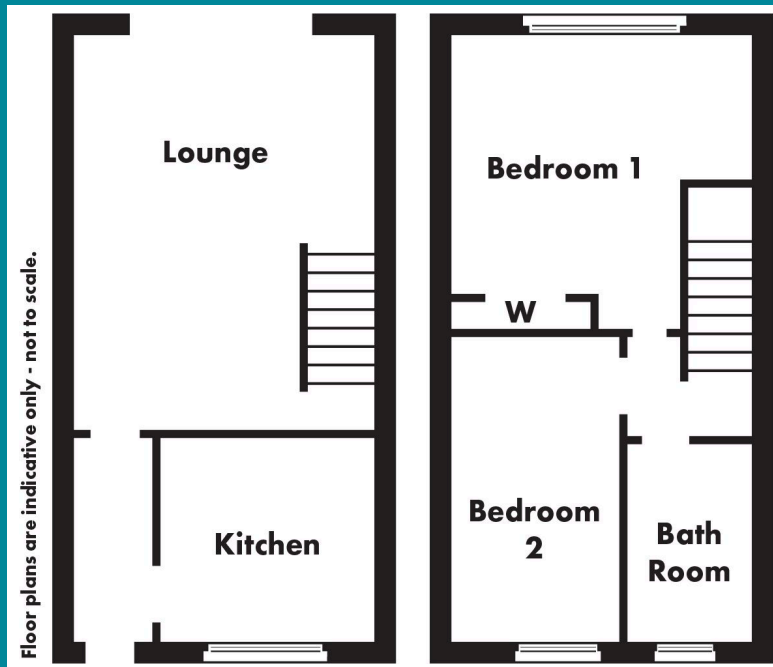




Viewing
Through solicitors on 01294 606700

Email
property@taylorandhenderson.co.uk

Reference
E472125



Our Offices

51 Hamilton Street, Saltcoats, Ayrshire, KA21 5DX
Tel: 01294 606700 & Fax: 01294 464827

22 Bank Street, Irvine, Ayrshire, KA12 0AG
Tel: 01294 278306 & Fax: 01294 272886

83 Main Street, Kilwinning, Ayrshire, KA13 6AN
Tel: 01294 557506 & Fax: 01294 558552
Email: property@taylorandhenderson.co.uk



DISCLAIMER: Whilst we endeavour to make these particulars as accurate as possible, they do not form part of any contract of offer, nor are they guaranteed. Measurements are approximate and in most cases are taken with a digital/sonic-measuring device and are taken to the widest point. We have not tested the electricity, gas or water services or any appliances. Photographs are reproduced for general information and it must not be inferred that any item is included for sale with the property. If there is any part of this that you find misleading or simply wish clarification on any point, please contact our office immediately when we will endeavour to assist you in any way possible.